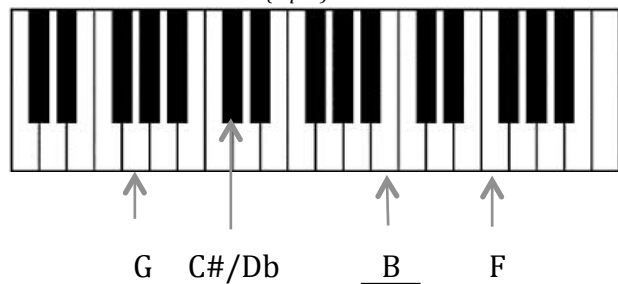


**Practice Musicianship Entrance Exam #3****KEY**

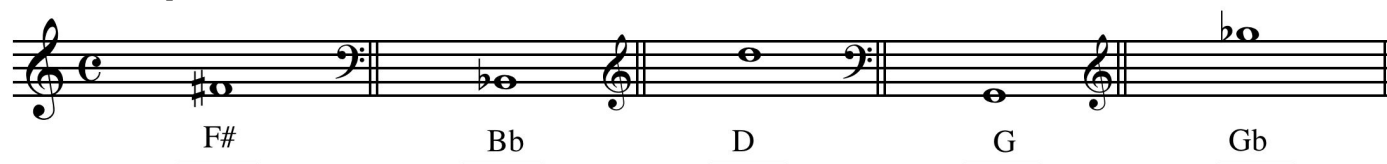
Time limit: 20 minutes

Place an "X" above each note or rhythm that is incorrectly played: *(played 3 times)* (5 pts.)*(Proctor - Play this version)*Identify the intervals that are played on the piano: *(played 3 times)* (4 pts.)1.     Maj 3rd     2.     Perfect 4th     3.     Maj 7th     4.     min 2nd    *(Proctor - Play these intervals:)*

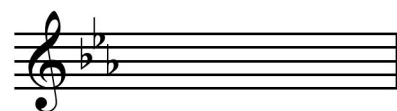
Name these notes: (4 pts.)



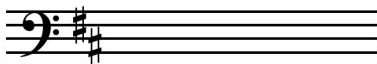
Name these pitches: (5 pts.)



Provide these key signatures in the appropriate clef: (3 pts.)



Eb Major



b minor



Ab Major

Identify these intervals by both quality and size: (4 pts.)

ex: M7      P5      A2      M3      M6

Write a second note to form the correct interval with the given note – up or down as indicated: (4 pts.)

up minor 7th      up minor third      down major 3rd      down minor 6th

Construct a one-octave ascending A major scale. Use accidentals (*not* a key signature): (3 pts.)

Construct a one-octave ascending B natural minor scale. Use accidentals (*not* a key signature): (3 pts.)

Build triads as indicated above each given note: (8 pts.)

major      minor      augmented      diminished

Identify the printed triad, and then write it in its first and second inversions: (4 pts.)

C minor      first inversion      second inversion

Place bar lines in this example so that each measure is correctly indicated: (3 pts.)