

# Practice Musicianship Entrance Exam #2

Name: \_\_\_\_\_ I-number: \_\_\_\_\_ Instrument: \_\_\_\_\_

----- Time limit: 20 minutes -----

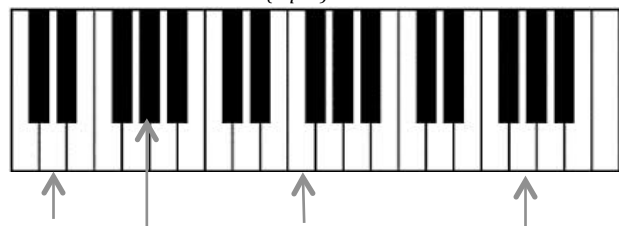
Place an “X” above each note or rhythm that is incorrectly played: *(played 3 times)* (5 pts.)



Identify the intervals that are played on the piano: *(played 3 times)* (4 pts.)

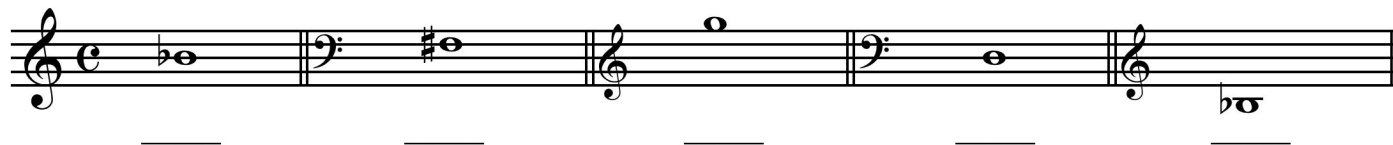
1. \_\_\_\_\_ 2. \_\_\_\_\_ 3. \_\_\_\_\_ 4. \_\_\_\_\_

Name these notes: (4 pts.)



\_\_\_\_\_

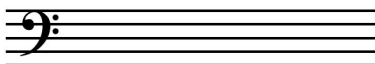
Name these pitches: (5 pts.)



Provide these key signatures in the appropriate clef: (3 pts.)



G Major



c minor



Bb Major

ex: m6

up major 7th      up minor 6th      down perfect 5th      down tritone

A blank musical staff with a treble clef. The staff consists of five horizontal lines. The treble clef is positioned at the beginning of the staff, with its hook pointing upwards. The staff is empty, with no notes or other markings.

A blank musical staff with a treble clef. The staff consists of five horizontal lines. The treble clef is positioned at the beginning of the staff, with its hook pointing upwards. The staff is empty, with no notes or other markings.

The diagram shows four musical staves, each representing a different triad. The first staff is in bass clef and shows a major triad with notes on the 1st, 3rd, and 5th lines. The second staff is in bass clef and shows a minor triad with notes on the 1st, 3rd, and 4th lines. The third staff is in treble clef and shows an augmented triad with notes on the 1st, 3rd, and 5th lines. The fourth staff is in treble clef and shows a diminished triad with notes on the 1st, 3rd, and 4th lines. Below each staff is its corresponding name: major, minor, augmented, and diminished.

A musical staff with a treble clef. It shows a triad in first inversion (two notes on the staff, one below the staff) and a triad in second inversion (one note on the staff, two below the staff). The labels "first inversion" and "second inversion" are written below the staff.